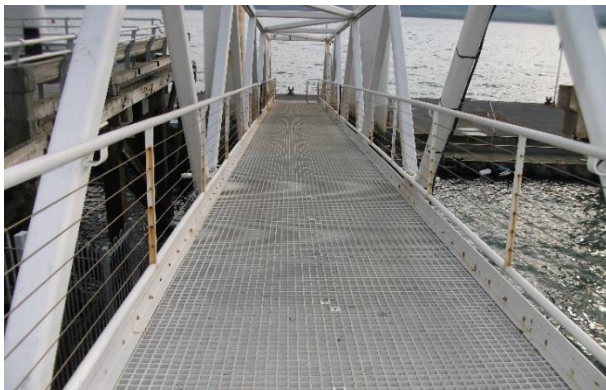


CRUISE ACCESS STATEMENT



This access statement does not contain personal opinions as to our suitability for those with disabilities but aims to accurately describe the facilities and services that we offer to all our passengers. This statement is reviewed regularly and updated when appropriate.

Cruises depart from the pier in Beaumaris. Our ticket kiosk is located at the entrance to the pier, postcode LL58 8BS. Beaumaris Pier is owned and operated by Anglesey County Council, access along the pier is level. At the end of the pier there is a ramp onto a floating pontoon where our vessels are secured for boarding. The access ramp to the pontoon can be steep when the tide is out, please consider this when arranging your visit. Passengers are required to keep clear of the water's edge, bollards and lines for their own safety.



Our vessels do not have full disabled access, however with assistance passengers with restricted mobility or children in prams may be able to board certain vessels. Passengers are welcome to view the loading arrangements before booking.

The crew will keep watch as the wash off passing vessels may require us to halt passengers boarding until the wash subsides. There are handrails to help with boarding and crew will be there to assist passengers.

Please also look at our plan your visit page <https://www.seacoastsafaris.co.uk/Plan-Your-Visit/> Beaumaris can be very busy, please ensure you allow enough time based on your personal requirements as departures cannot be delayed for late arrivals.

The access for each vessel is described below.

Neptune Explorer – cruise vessel 12m Licensed to carry 54 passengers and 2 crew.

There is a forward wheelhouse with passenger seating behind the wheelhouse. Most of the seating is outside with additional seating under cover (not inside), immediately behind the wheelhouse.

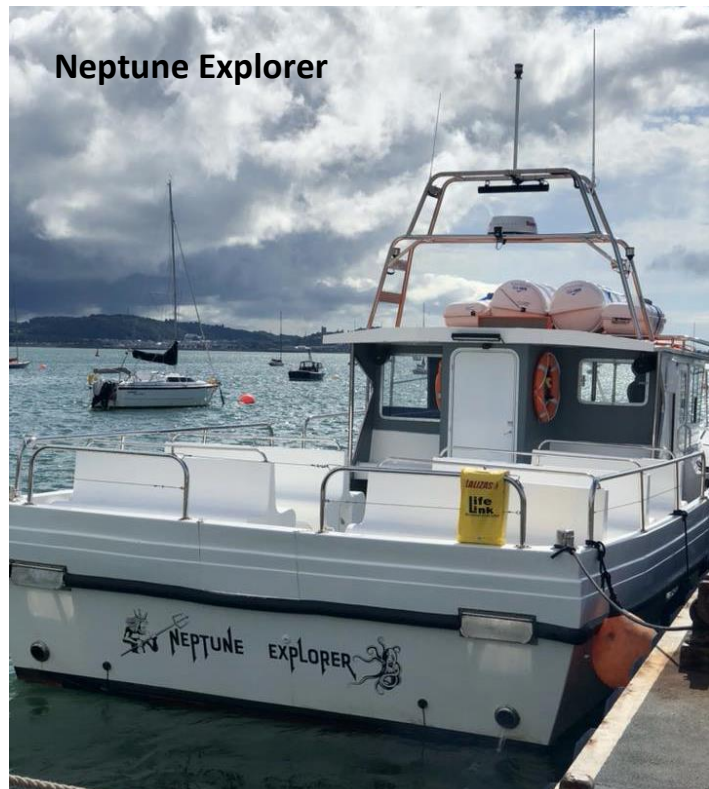


Neptune Explorer

Passengers may get wet due to spray. In certain conditions there can be more spray kicked up affecting passengers, especially on the main deck area. If passengers suffer from motion sickness it is advisable to sit towards the middle, or just behind the middle of the vessel, this is where you will find the least motion. The main deck area is level but can get wet. There is a small level difference in the floor in the covered seating area, this is marked with black and yellow grippy tape.

There is a WC on the main deck area. The WC is relatively small with a narrow door and a raised lip/threshold to step over.

The wheelhouse is at the front of the vessel, there is a threshold to step over at the wheelhouse door, this is to prevent water ingress. Passengers are not allowed forward of the wheelhouse.



Neptune Explorer

Neptune Explorer has a boarding platform (gangway) which is fitted to the vessel before boarding passengers, this spans the gap between the vessel and the pontoon. Please be aware there is a lip on the edges of the platform to prevent passengers accidentally slipping off the edge. The boarding platform is wide enough to accommodate most wheelchairs. The boarding platform will move and articulate with the motion of the vessel and floating pontoon. Passengers are advised to watch the edge of the gangway as it is a potential trip hazard. There are multiple handrails at different heights for passengers to use when boarding the vessel.



Once over the boarding platform there are 3 steps down onto the deck. For wheelchair users it may be possible to access the vessel. Once over the boarding platform the wheelchair must be manoeuvred down to deck height (less than 1m down), this involves some lifting and lowering.

The master must decide if the conditions, including sea state, expected weight of the passenger and wheelchair and the assistance available are suitable before boarding any passenger in a wheelchair. If it is deemed in anyway unsafe to board the passenger the Master will discreetly and sensitively explain to the passenger and a full refund will be issued, and if possible, under different conditions an alternative could be offered.

It is not possible to accommodate mobility scooters on board, but they may be left on the pontoon during the cruise.

Salacia – 8.5m Catamaran licensed to carry 12 passengers and 2 crew.

There is a forward wheelhouse with passenger seating behind the wheelhouse. All the passenger seating is outside.



Passengers may get wet due to spray. In certain conditions there can be more spray kicked up affecting passengers. If passengers suffer from motion sickness it is advisable to sit towards the middle, or just behind the middle of the vessel, where you will find the least motion. The main deck area is level but can get wet.

There is a WC on the main deck area. The WC is relatively small with a narrow door and a raised lip/threshold to step over.

The wheelhouse is at the front of the vessel, there is a threshold to step over at the wheelhouse door this is to prevent water ingress.



There is a gap between the vessel and the pontoon which passengers must step over. There are multiple handrails at different heights for passengers to use when boarding the vessel. There are then 4 steps down onto deck level, these steps are quite steep and may be best negotiated backwards like a ladder.

At present it is not possible for us to accommodate wheelchairs on Salacia.

Supanova – 11m Catamaran.

There is an island wheelhouse with seating for 22 passengers behind the wheelhouse outside. There are an additional three seats inside the wheelhouse.



Passengers may get wet due to spray. In certain conditions there can be more spray kicked up affecting passengers. If passengers suffer from motion sickness it is advisable to sit towards the middle, or just behind the middle of the vessel, where you will find the least motion. The main deck area is level but can get wet.

Supanova has an island wheelhouse towards the front of the vessel. Passenger access is sometimes permitted around the front of the wheelhouse. There is a floor level difference and a step to access the forward deck area. There are rear and side doors into the wheelhouse, each with a threshold to step over to prevent water ingress.



There is a WC on the main deck area. The WC is relatively small with a narrow door and a raised lip/threshold to step over.



There is a side door in the boat to allow boarding.

There is a boarding platform fixed to the side of the wheelhouse which hinges down to rest on the pontoon.

The boarding platform is not wide enough to accommodate wheelchairs; therefore at present it is not possible for us to accommodate wheelchairs on Supanova.

The boarding platform will move and articulate with the motion of the vessel and floating pontoon. Passengers are advised to watch the edge of the gangway as it is a potential trip hazard.

There are multiple handrails at different heights for passengers to use when boarding the vessel.

Once over the boarding platform there are three steps down onto the deck.

